



Great Hucklow

, Buxton, SK17 8RF

Offers Over £375,000



Great Hucklow

, Buxton, SK17 8RF

Offers over £375,000. Charming, characterful and surrounded by stunning Derbyshire Countryside. Set in the tranquil Peak District village of Great Hucklow. is this pretty, peaceful and surprisingly practical 3 bedroom semi detached countryside cottage, neighbouring tonnes of countryside walks and conveniently located close to village amenities.

Offering a spacious 1463 of accommodation over 2 storeys, the property features, a social breakfast kitchen, 2 reception rooms offering fantastic flexibility, 3 good sized bedrooms and 2 bathrooms, including an en-suite shower room.

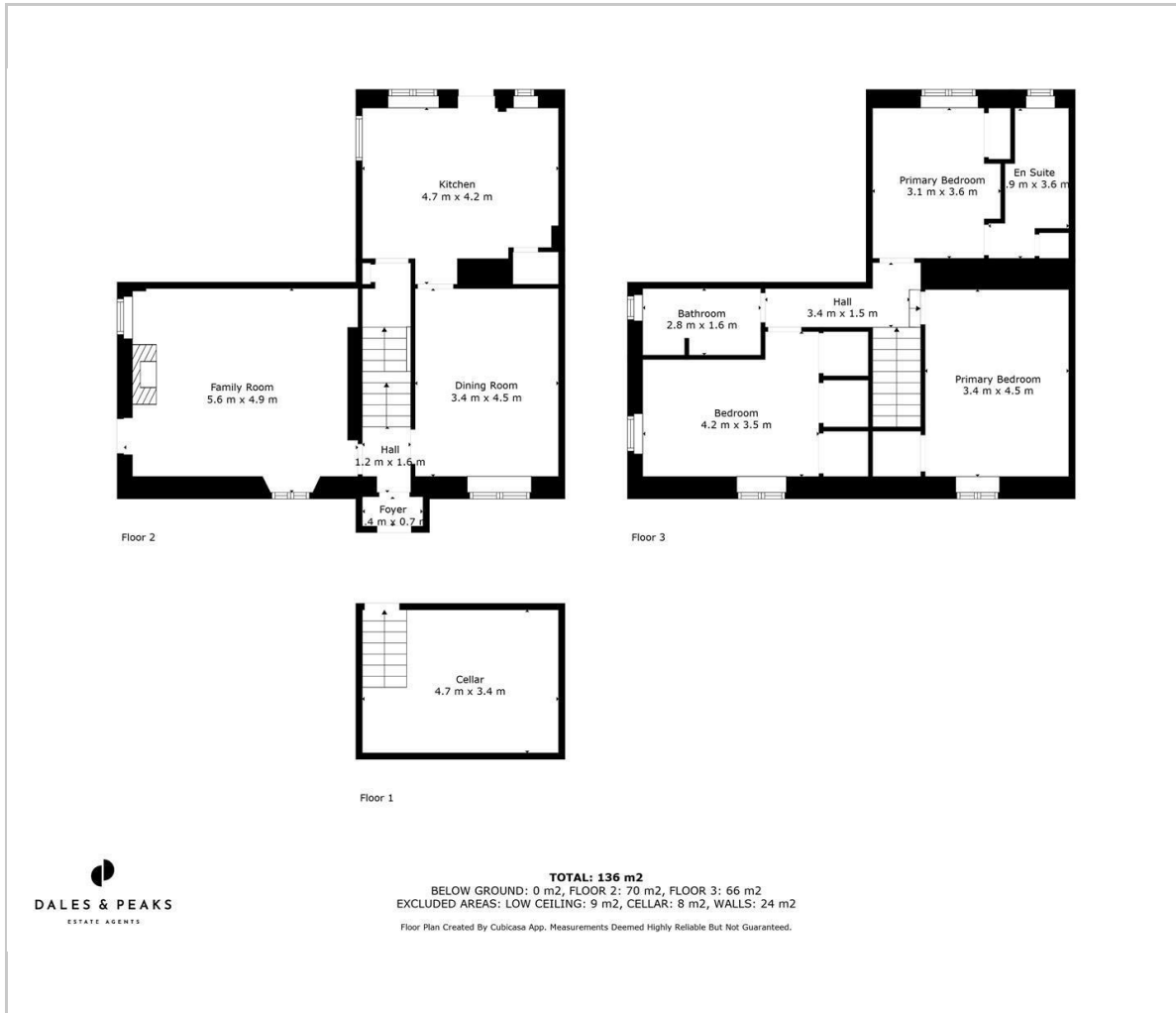
Externally, whilst surrounded by stunning countryside, Gate House has low maintenance, small courtyard garden with an additional patio area and off street parking.

Dales & Peaks ForwardMove
please read





Floor Plan

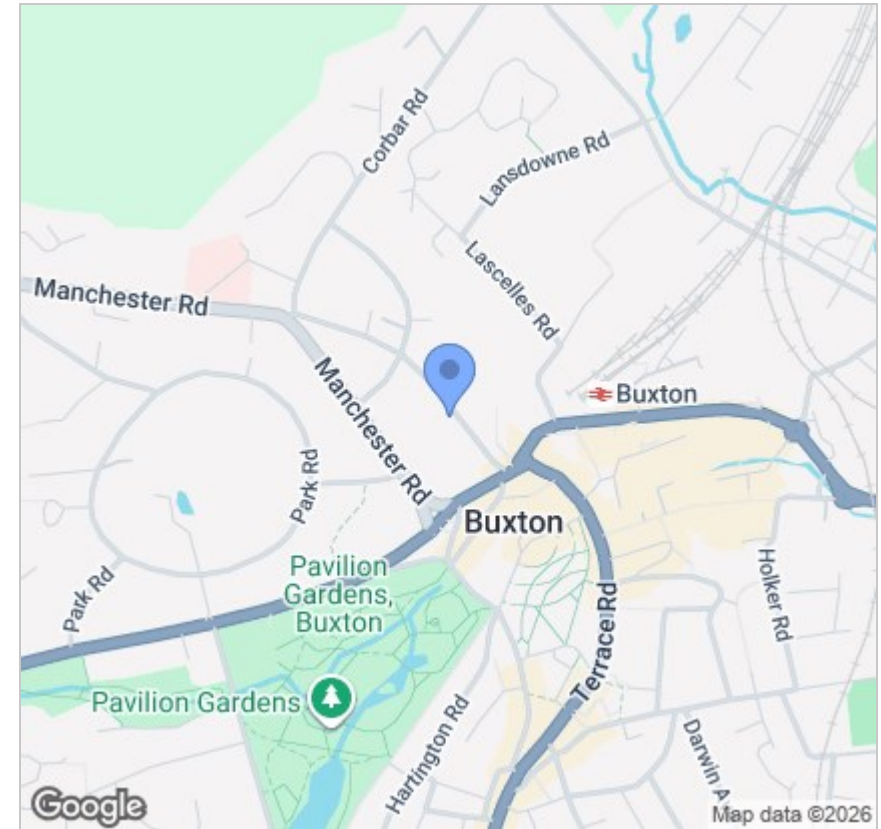


Viewing

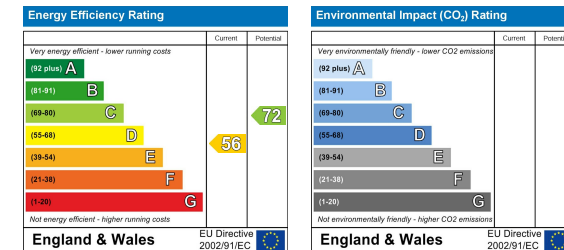
Please contact our Chesterfield Office on 01246 567540 if you wish to arrange a viewing appointment for this property or require further information.

These particulars, whilst believed to be accurate are set out as a general outline only for guidance and do not constitute any part of an offer or contract. Intending purchasers should not rely on them as statements of representation of fact, but must satisfy themselves by inspection or otherwise as to their accuracy. No person in this firm's employment has the authority to make or give any representation or warranty in respect of the property.

Area Map



Energy Efficiency Graph



131 Chatsworth Road, Chesterfield, Derbyshire, S40 2AP
T: 01246 567540



E: info@dalesandpeaks.co.uk
www.dalesandpeaks.co.uk